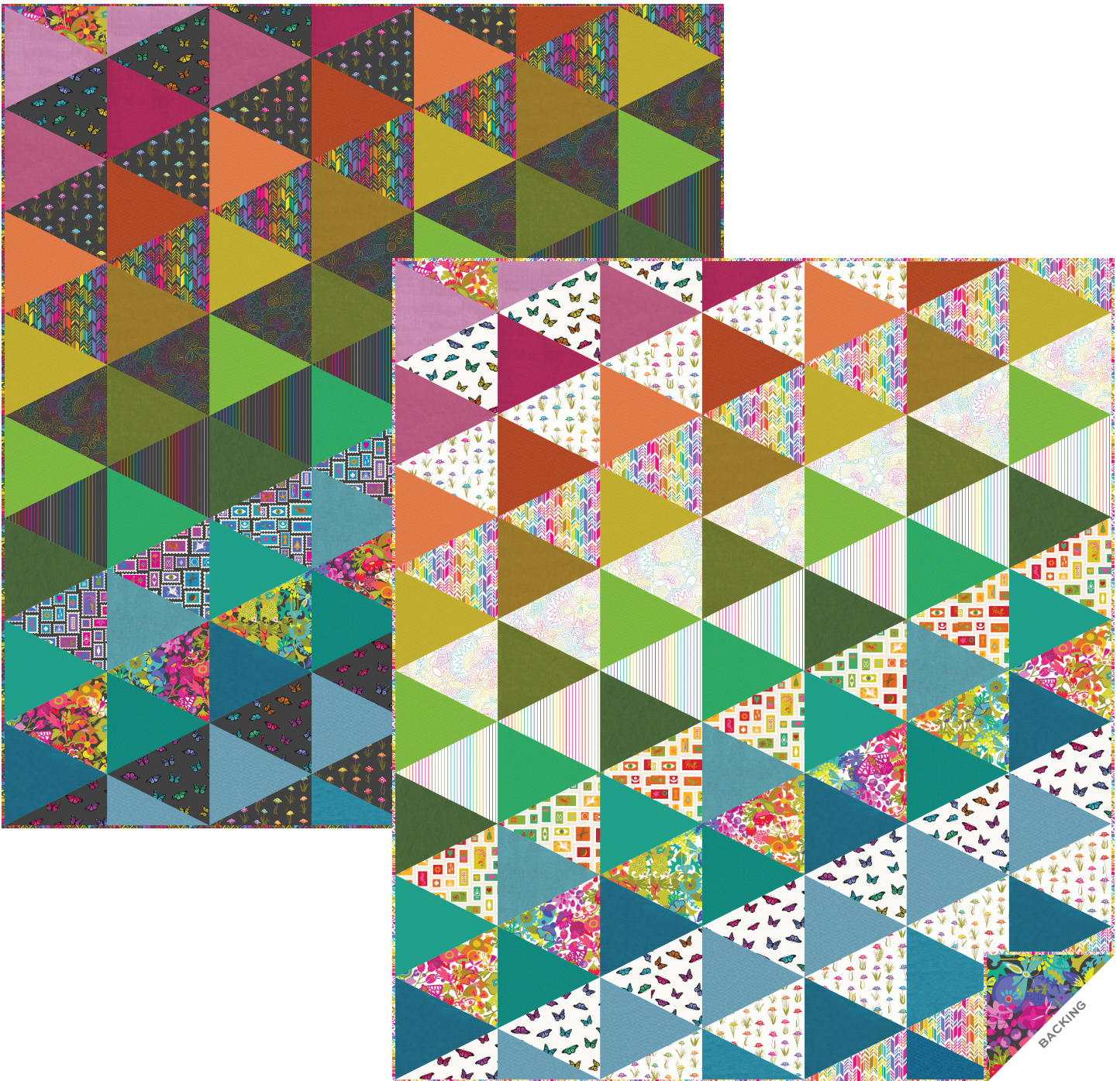


Color Wheel + Color Wheel 108s

ALISON GLASS



Through the Kaleidoscope Quilt designed by: **Heidi Pridemore**

Quilt Size: **56" x 64"** • Skill Level: **Intermediate**

andover • makower uk

Free Pattern Download Available

1384 Broadway New York, NY 10018
Tel. (800) 223-5678 • andoverfabrics.com

Through the Kaleidoscope



Featuring Andover Fabrics new Collection: Color Wheel by Alison Glass for Andover Fabrics

Quilt designed by Heidi Pridemore of The Whimsical Workshop

Quilt finished 56" x 64"

Cutting Directions (Both Versions)

Note: Read assembly directions before cutting patches. Borders are cut to exact length required plus ¼" seam allowance. WOF designates the width of fabric from selvedge to selvedge (approximately 42" wide).

- Fabric A** (7) Template 2 triangles.
- Fabric B** (7) Template 2 triangles.
(1) Template 3 triangle.
- Fabric C** (1) Template 1 triangle.
(8) Template 2 triangles.
(1) Template 3 triangle.
- Fabric D** (1) Template 1 triangle.
(8) Template 2 triangles.
(1) Template 3 triangle.
- Fabric E** (1) Template 1 triangles.
(8) Template 2 triangles.
(1) Template 3 triangle.
(6) 2 ½" x WOF strips for the binding.
- Fabric F** (1) Template 1 triangles.
(7) Template 2 triangles.
- Fabric G** (7) Template 2 triangles.
- Fabric H** (1) Template 1 triangle.
(1) Template 2 triangle.
- Fabric I** (2) Template 2 triangles.
- Fabric J** (1) Template 1 triangle.
(1) Template 2 triangle.
- Fabric K** (3) Template 2 triangles.
- Fabric L** (1) Template 1 triangle.
(2) Template 2 triangles.
- Fabric M** (4) Template 2 triangles.
- Fabric N** (3) Template 2 triangles.
- Fabric O** (4) Template 2 triangles.
- Fabric P** (3) Template 2 triangles.
- Fabric Q** (4) Template 2 triangles.
- Fabric R** (3) Template 2 triangles.
- Fabric S** (4) Template 2 triangles.

Fabric Requirements

		Yardage	Fabric Dark	Light
Fabric A	blocks	⅝ yard	1125-K	1125-L
Fabric B	blocks	⅝ yard	1441-K	1441-L
Fabric C	blocks	⅝ yard	1443-K	1443-L
Fabric D	blocks	⅝ yard	1444-K	1444-L
Fabric E	blocks, binding	1 yard	1445-K	1445-L
Fabric F	blocks	⅝ yard	1446-K	1446-L
Fabric G	blocks	⅝ yard	1447-K	1447-L
Fabric H	blocks	Fat ¼	K-12-Thistle*	
Fabric I	blocks	Fat ¼	K-12-Foxglove*	
Fabric J	blocks	Fat ¼	K-12-Cosmos*	
Fabric K	blocks	⅓ yard	K-12-Pumpkin*	
Fabric L	blocks	Fat ¼	K-12-Tiger*	
Fabric M	blocks	⅓ yard	K-12-No2 Pencil*	
Fabric N	blocks	⅓ yard	K-12-Goldenrod*	
Fabric O	blocks	⅓ yard	K-12-Turtle*	
Fabric P	blocks	⅓ yard	K-12-Fern*	
Fabric Q	blocks	⅓ yard	K-12-Pine*	
Fabric R	blocks	⅓ yard	K-12-Shamrock*	
Fabric S	blocks	⅓ yard	K-12-Jade*	
Fabric T	blocks	⅓ yard	K-12-Dragonfly*	
Fabric U	blocks	⅓ yard	K-12-Peacock*	
Fabric V	blocks	⅓ yard	K-12-Mermaid*	
Fabric W	blocks	⅓ yard	K-12-Hope*	
Fabric X	blocks	Fat ¼	K-12-Beetle*	
Fabric Y	blocks	Fat ¼	K-12-Cobalt*	
Backing		2 yards	1449-K**	1449-K**

*Kaleidoscope Collection

**Color Wheel 108s Collection

- Fabric T** (3) Template 2 triangles.
- Fabric U** (6) Template 2 triangles.
- Fabric V** (3) Template 2 triangles.
- Fabric W** (5) Template 2 triangles.
(1) Template 3 triangle.
- Fabric X** (1) Template 2 triangle.
(1) Template 3 triangle.
- Fabric Y** (1) Template 2 triangle.
(1) Template 3 triangle.
- Backing** (1) 64" x 72" strip.

Through the Kaleidoscope

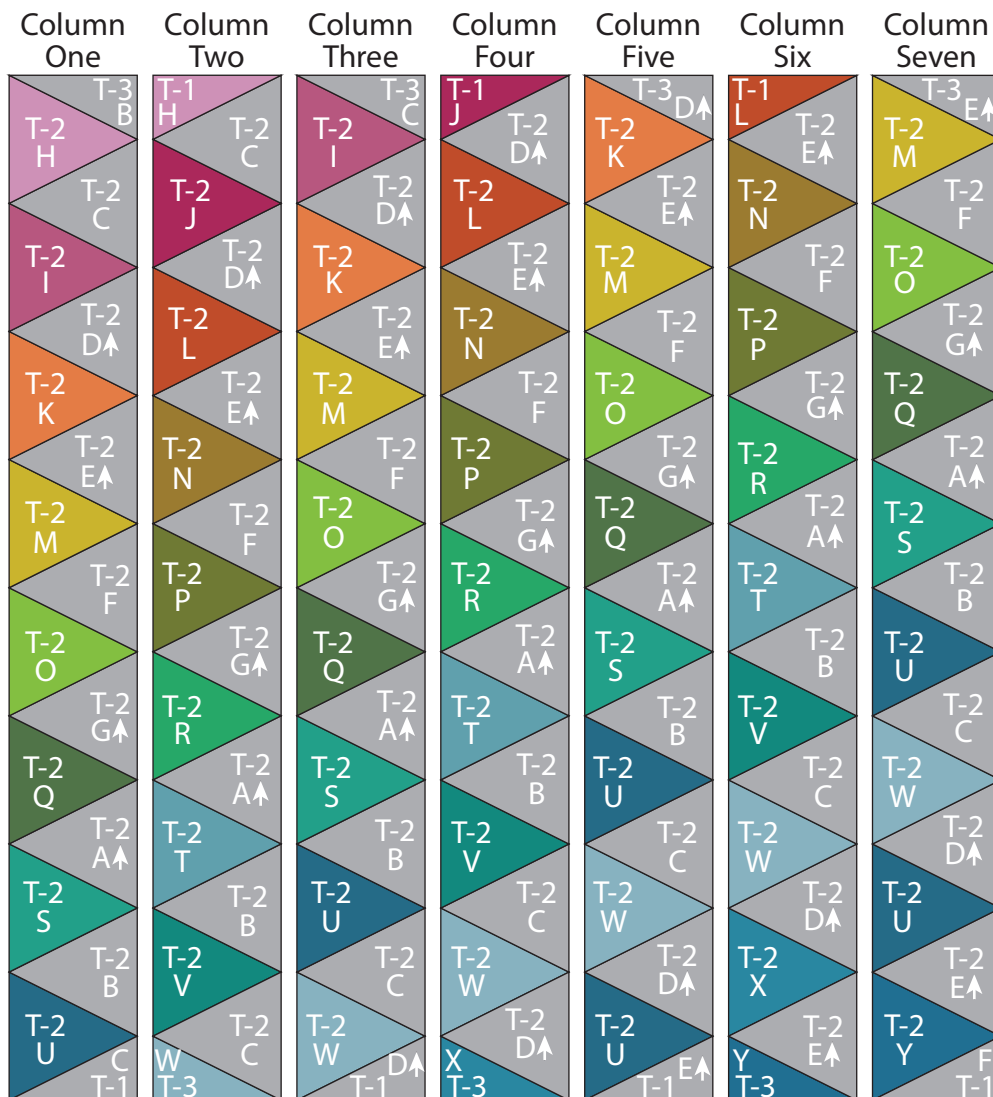
Quilt Top Assembly

(Refer to the Quilt Layout when assembling the quilt top.)

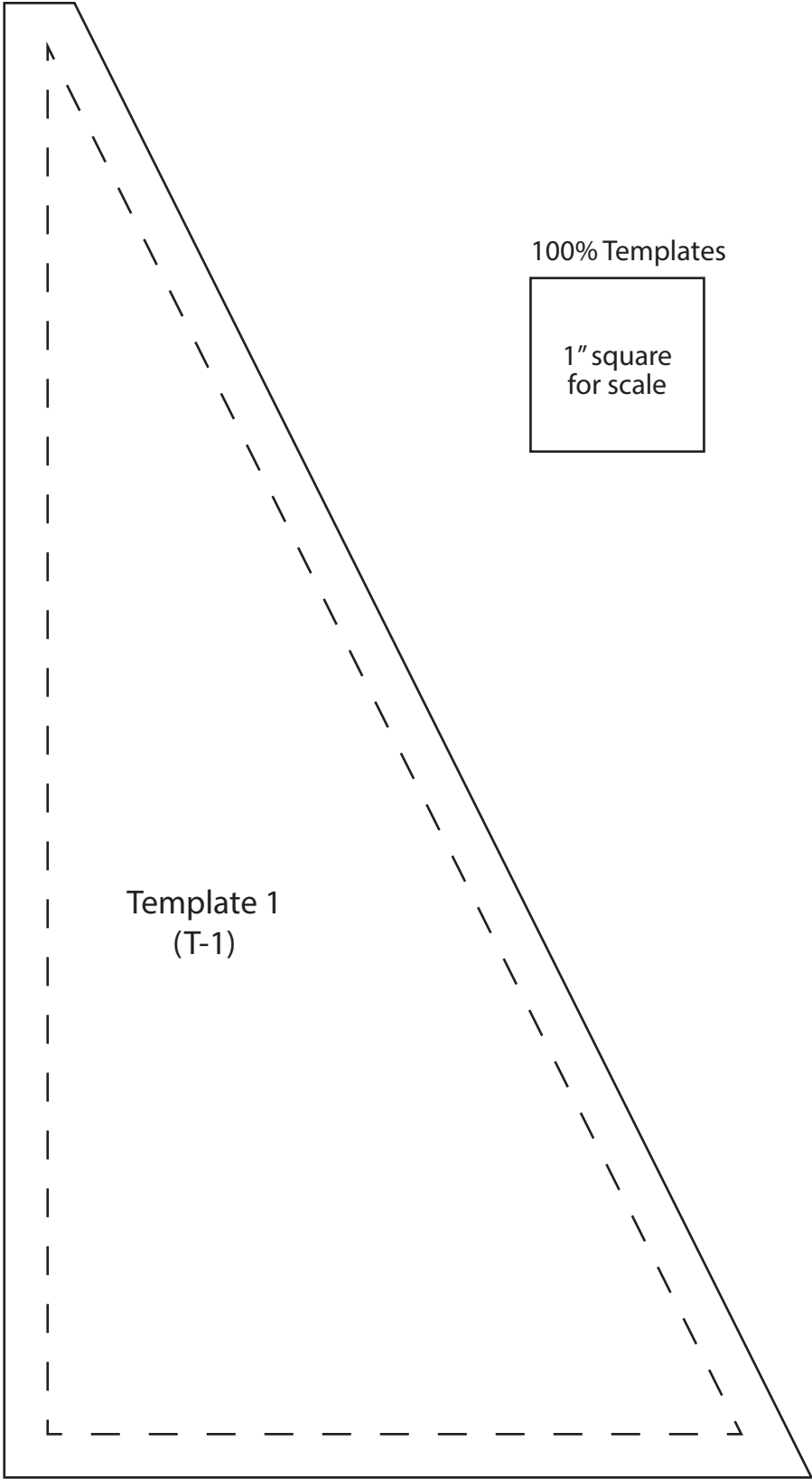
1. Sew together (15) assorted color Template 2 triangles. Sew (1) Fabric B Template 3 triangle to the top and (1) Fabric C Template 1 triangle to the bottom of the newly sewn strip to make Column One.
2. Repeat Step 1 and refer to the Quilt Layout for fabric identification, placement and orientation to make Column Two through Column Seven.
3. Sew together the (7) pieced Columns, lengthwise and in numerical order from left to right, to make the quilt top.

Finishing the Quilt

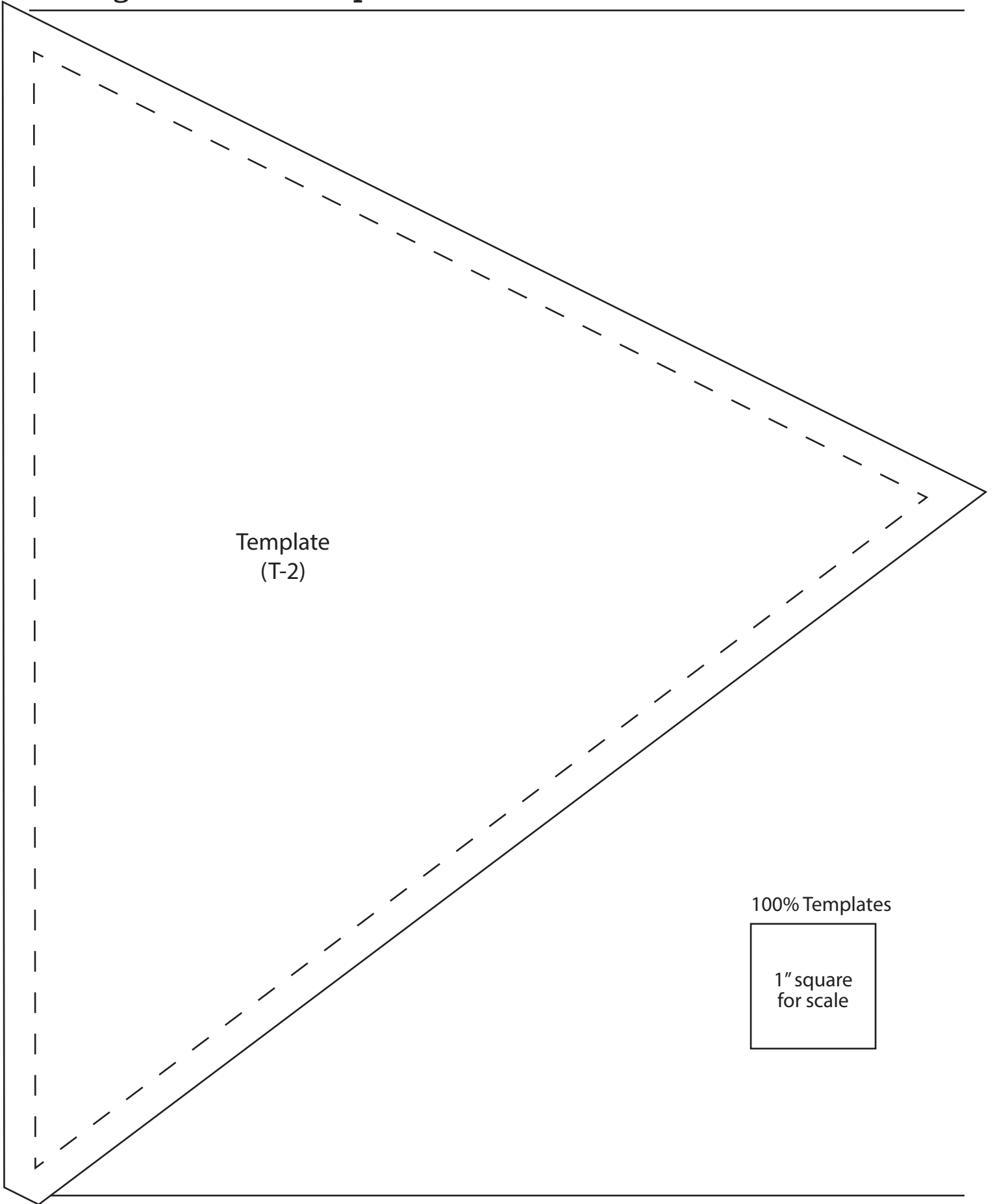
4. Layer and quilt as desired.
5. Sew the (6) Fabric E binding strips together, end to end with a 45-degree seams, to make the binding. Fold this long strip in half lengthwise with wrong sides together and press.
6. Bind as desired.



Quilt Layout

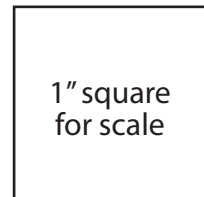


Through the Kaleidoscope

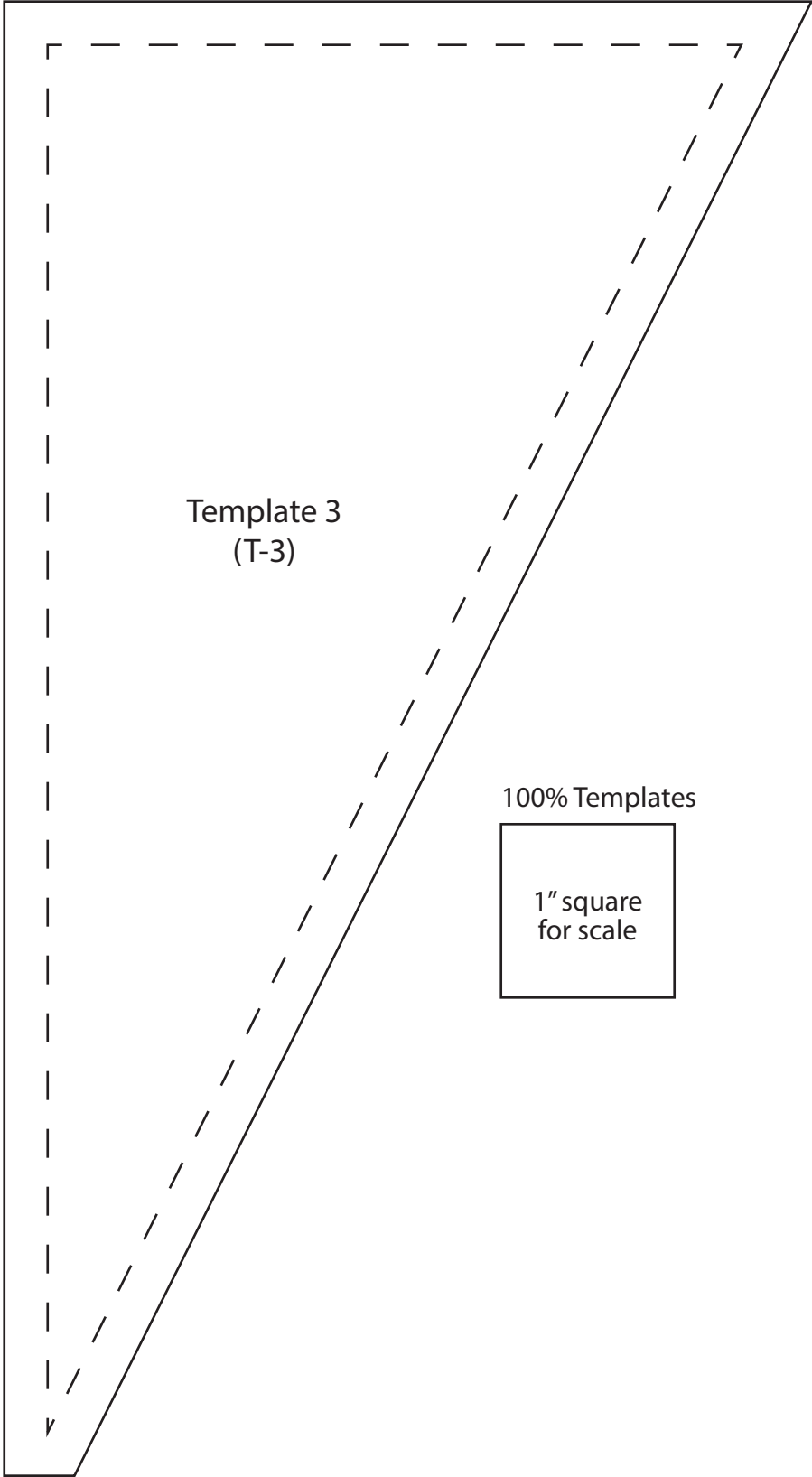


Template
(T-2)

100% Templates



1" square
for scale



Color Wheel + Color Wheel 108s



ALISON GLASS

Note: Yardages below are for the Dark Version of the quilt. Please reference the fabric requirements on Page 2 for the accompanying Kaleidoscope solids and all the Light Version fabrics.



1125-K

5/8 yd



1125-L

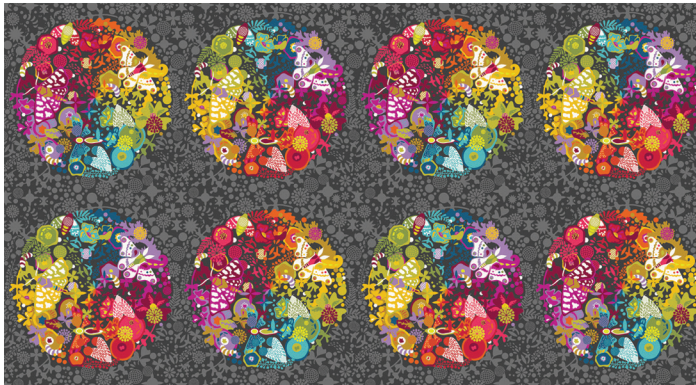


1441-K

5/8 yd



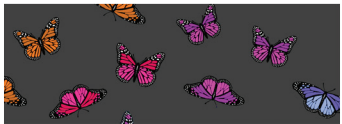
1441-L



1442-K

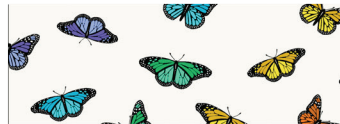


1442-L

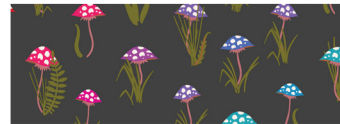


1443-K

5/8 yd



1443-L



1444-K

5/8 yd



1444-L

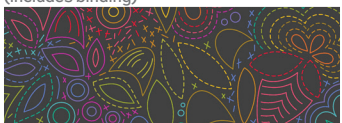


1445-K
(includes binding)

1 yd



1445-L



1446-K

5/8 yd

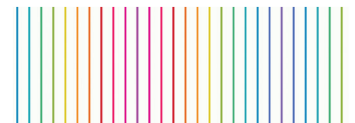


1446-L

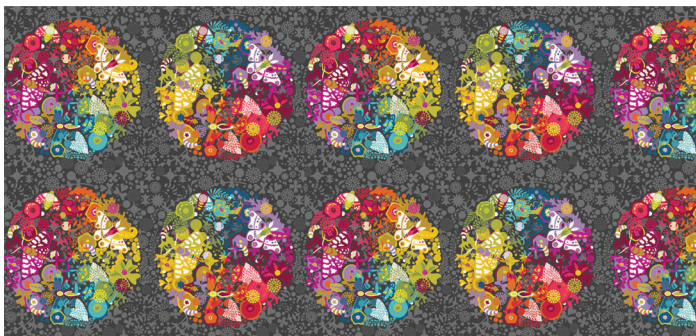


1447-K

5/8 yd



1447-L



1448-K



1449-K
(includes backing)

2 yds

Bolts needed to cut project kits: 15 yds = 1 bolt

Kaleidoscope: 12 yds = 1 bolt • 108" quilt backing: 18 yds = 1 bolt

Fabrics shown are 25% of actual size except SKU's 1442-K, 1442-L, 1448-K & 1449-K.

andover • makower.uk

Free Pattern Download Available

1384 Broadway New York, NY 10018
Tel. (800) 223-5678 • andoverfabrics.com